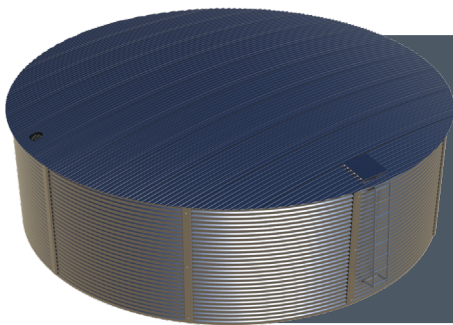




# FARMFEST SPECIALS



**Premium Steel Tanks. Professional Service.**



**100,000L  
ASL100**

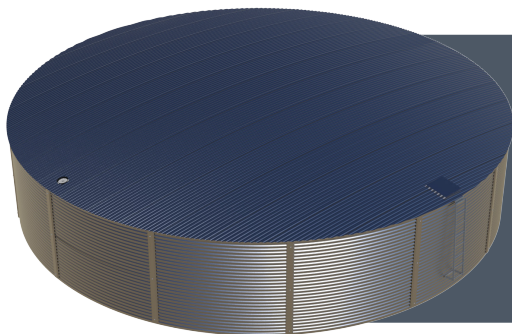
Nominal Capacity 104,994L  
Wall Height 2.22m  
Wall Diameter 7.76m  
Total Height 2.58m  
Base Diameter 9.76m

**GALVANISED**

**\$12,100**

**INC GST**

**+ \$1000 FOR STD COLOUR**



**210,000L  
ASL210**

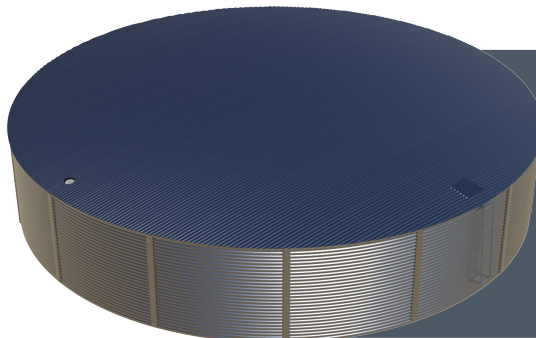
Nominal Capacity 218,715L  
Wall Height 2.22m  
Wall Diameter 11.20m  
Total Height 2.73m  
Base Diameter 13.20m

**GALVANISED**

**\$24,200**

**INC GST**

**+ \$1650 FOR STD COLOUR**



**245,000L  
ASL245**

Nominal Capacity 253,593L  
Wall Height 2.22m  
Wall Diameter 12.06m  
Total Height 2.76m  
Base Diameter 14.06m

**GALVANISED**

**\$28,050**

**INC GST**

**+ \$1650 FOR STD COLOUR**

Freight charges apply to some areas. Ends 30 June 2025.



**Water Installation & Contracting Services**

**Lewis Pryce**

**Phone: 0408 809 988**

**Email: admin@waterinstall.com.au**

**Verified Dealer**

**Aqualine**  
STEEL TANKS

**Bushmans**  
SAVING AUSTRALIA'S WATER



**Scan for Aqualine Brochure**